

# XR35

The innovation continues with our new XR35 Plus Series form.

## Product Overview

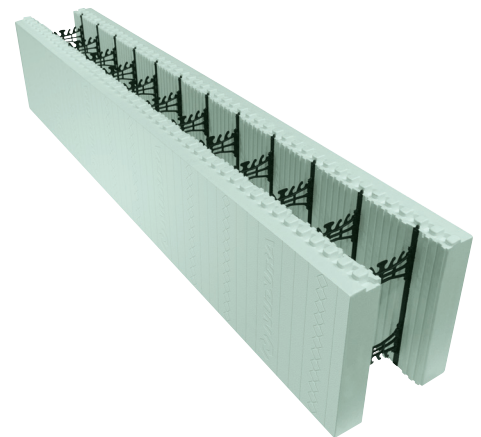
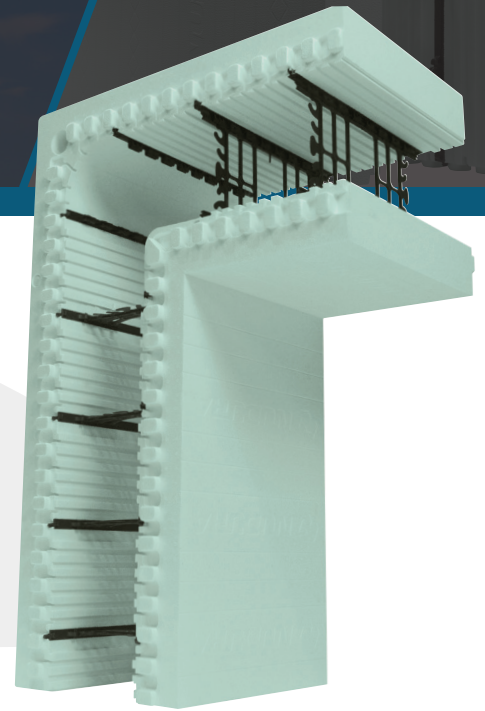
Nudura has revolutionized the ICF industry from its inception; making quality products that feature innovation to make the building process easier and faster for our customers. We believe in continuous R&D that allows us to provide the most innovative line of Insulated Concrete Forms in the market.

The XR35 form, with its 4" (100 mm) thick EPS panels, provide a significant increase in insulation performance. It is available with a 6" (150 mm) and 8" (200 mm) core as a standard form and a 90° corner form.

The fastening strips remain 5/8" (16 mm) below the surface of the EPS and are located at 8" (200 mm) on center. The fastening strip is marked with a diamond pattern making fastening the interior or exterior finishes quick and easy on-site.

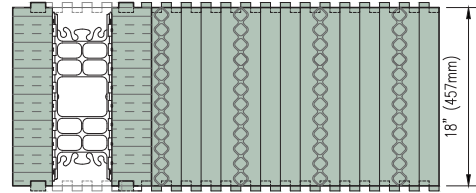
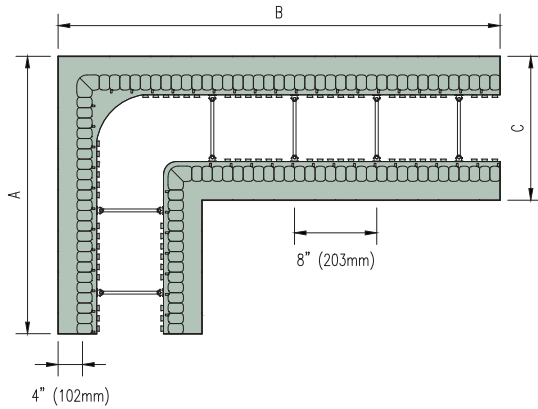
## Features & Benefits

- 4" (100 mm) EPS panels
- Newly designed fastening strip
- Minimum R-35 (RSI 6.16, U-Value 0.16) insulation value
- Features Nudura's Innovative Patented Technologies
- Full line of ICF product accessories from Waterproof material to bracing
- Access to full on-site technical support through a dedicated distributor network

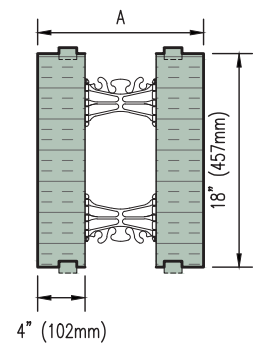
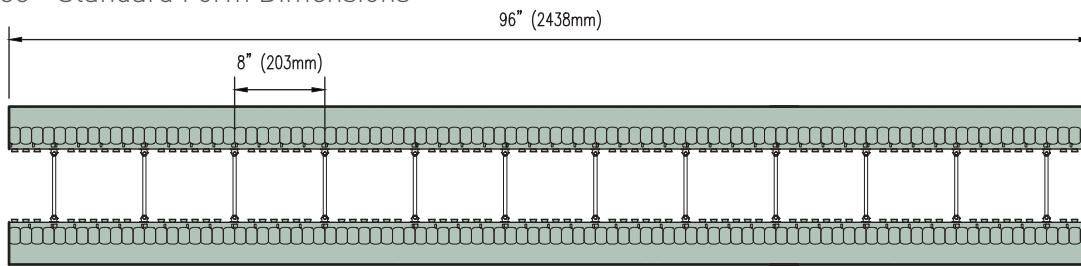


# Technical Specifications

## XR35 - 90° Corner Form Dimensions



## XR35 - Standard Form Dimensions



XR35 Standard Form		
Core Width	6" [150mm]	8" [200mm]
Length	96" [2438mm]	96" [2438mm]
Width A	14" [356mm]	16" [406mm]
Height	18" [457mm]	18" [457mm]
EPS Thickness	4" [102mm]	4" [102mm]
Qty./Bundle	2	2
Code#	NUS-IX496-06	NUS-IX496-08

XR35 90° Corner Form		
Core Width	6" [150mm]	8" [200mm]
Length A	27" [686mm]	29" [737mm]
Length B	43" [1092mm]	45" [1143mm]
Width C	14" [356mm]	16" [406mm]
Height	18" [457mm]	18" [457mm]
Qty./Bundle	4	4
Code#	NUS-IX490-06	NUS-IX490-08

XR35 Unassembled Panel	
Length	96" [2438mm]
Height	18" [457mm]
EPS Thickness	4" [102mm]
Qty./Bundle	4 Panels (2 pairs per bundle)
Code#	NUS-IXPAN-00

Nudura Inc. | 27 Hooper Road, Unit 10 | Barrie, ON L4N 9S3 | 866.468.6299 | nudura.com

Tremco CPG brings together Tremco Incorporated's Commercial Sealants & Waterproofing and Roofing & Building Maintenance operating divisions; Dryvit Systems, Inc.; Nudura Inc.; Willseal; Weatherproofing Technologies, Inc. and Weatherproofing Technologies Canada, Inc.



Construction Products Group

Nudura® is a registered trademark of Nudura Inc. Use of the ® symbol indicates registration with the US Patent & Trademark Office and the Canadian Intellectual Property Office.

07/2020

tremcocpg.com