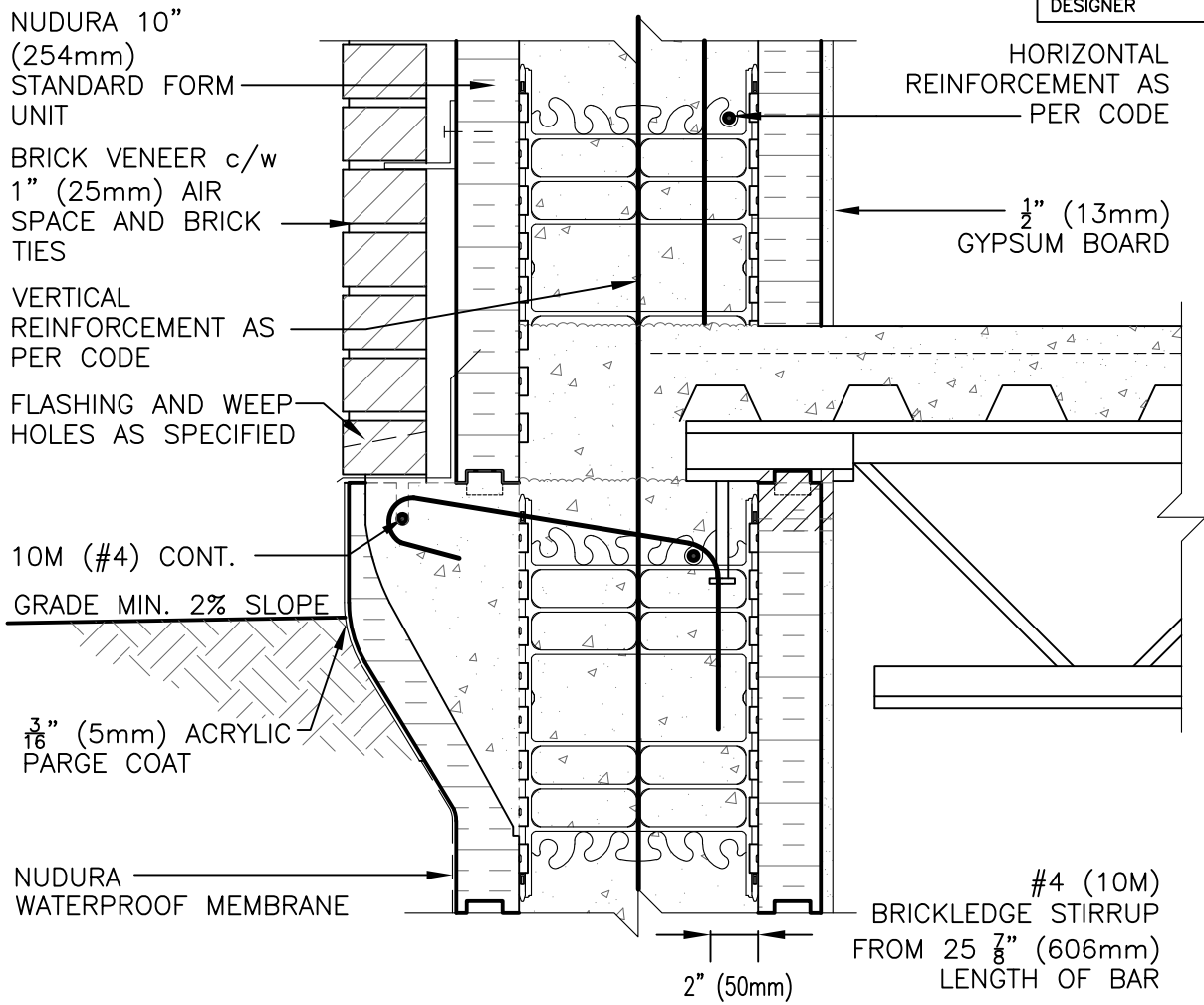
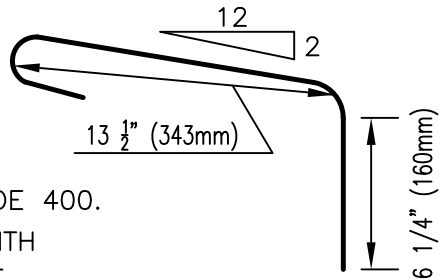


**DISCLAIMER NOTICE:**  
 SPECIFIC INFORMATION  
 REQUIRED FOR COMPLIANCE  
 WITH LOCAL CODES IS THE  
 RESPONSIBILITY OF THE  
 DESIGNER



**NOTES:**

1. MINIMUM CONCRETE COMPRESSIVE STRENGTH AT 28 DAYS 3000 PSI (20 MPa).
2. REINFORCING STEEL SHALL BE HARD GRADE DEFORMED BARS CONFORMING TO CSA G30.12 GRADE 400.
3. WALL REINFORCING SHALL BE IN ACCORDANCE WITH NUDURA INTEGRATED BUILDING SYSTEM, LOCAL CODE OR ENGINEERING DRAWINGS.
4. BRICK UNIT WEIGHT: 40LBS/FT (1.9 kPa) IN VERTICAL PLANE.
5. MAXIMUM WALL HEIGHT: 27' (8.23m) UNLESS ENGINEERED OTHERWISE
6. ASSUME BRICK LAYING IN ACCORDANCE WITH APPLICABLE CODES.



NUDURA 10" (254mm) BRICK LEDGE REINFORCEMENT DETAIL OWSJ FLOOR CONNECTION AT GRADE BRICK VENEER FINISH VERTICAL SECTION VIEW	
REV. NO. 002 TV	DWG NO. A10B02
DATE: APR 2007	
DRAWN BY: J. NEILON	SCALE: 1 : 8